



Wedge wire filter AS325-FD with automatic control AS-E4-01

(The control unit is not mounted on the filter upon delivery and must be installed by the customer, e.g. wall-mounted.)

for all models of our wedge wire filters and FMA automatic backwash filters

This control variant continuously monitors the differential pressure via two pressure transmitters. When the differential pressure reaches the preset value, the cleaning cycle of the filter element is initiated.

For wedge wire filters, the motor is first switched on and the cleaning of the filter element begins. Once cleaning is completed, the discharge valve is opened by the control unit, allowing the dirt removed from the filter element to be discharged from the housing.

In FMA automatic filters, the discharge of contaminants occurs simultaneously with the cleaning process.

In addition to differential-pressure-controlled cleaning, the cleaning cycle can also be triggered at adjustable time intervals or manually via the touchscreen.

Alongside the simple adjustment of operating parameters, the user-friendly touchscreen also allows real-time monitoring of current operating data. Furthermore, the control unit records the long-term differential pressure profile and displays it in a clear graphical diagram.

Advantages

- Simple and clearly structured user interface
- Error messages are clearly defined and displayed including troubleshooting guidance
- Low wear and low energy consumption, as the motor only operates during cleaning

Components

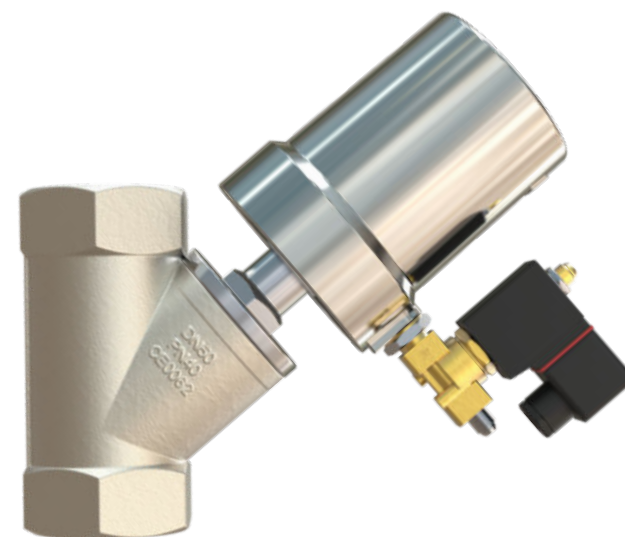
- Automatic Control Unit AS-E4-01
- Solenoid Valve 24 V/AC
- Discharge Valve (1.4408)
 - G3/4" angle seat valve for AS50
 - G2" angle seat valve for AS70/110/175 and AS110-FD / AS175-FD
 - DN80 flanged pneumatic ball valve for AS325-FD

System Requirements

- Electrical connection 400 V, 50 Hz (for the control unit and the motor)
- Compressed air connection with 4–6 bar (for the angle seat valve)
- Compressed air connection with 6–8 bar (for the pneumatic ball valve)



Automatic control AS-E4-01



Angle seat vent 2" with solenoid vent